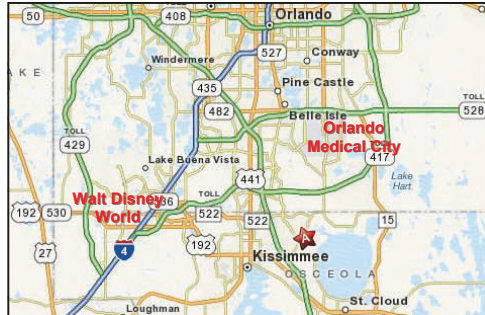


Orlando Area Commercial Land For Sale or JV With Owner



Boggy Creek Road/Buena Ventura Lakes—Kissimmee, FL

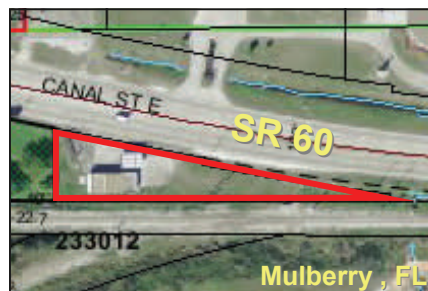
Outstanding location (population within 1-mile 11,250) — opportunity to purchase (possible owner-financing) or joint venture. Lots sizes range from 0.7 acre to 2.017 acres in Hilliard Isle Commercial Center. B-2 Zoning allows for many commercial uses including retail, medical or professional. **Off-site water retention, cross-access with adjacent lots, utilities to site, cleared and graded.**

Collier County Commercial Parcel



- Prime Highway 29 frontage (210 ft.)
- 1.01 acres—cross-access with adjacent property (North side)
- Impact fee credit of approx. \$34,000 included
- C-4 Zoning (Commercial)
- **Sale Price—\$425,000**

SR 60 Commercial Site



- Prime Highway 60 frontage (over 400 ft.)
- 1800 sf building
- Zoning allows for multiple uses
- **Sale Price—\$300,000 (owner-financing)**

**Also available: Orlando Retail Building
1200 sf—Curry Ford Rd.—\$395,000**

Intervest Realty Resources, LLC
Licensed Real Estate Broker

Call 407.923.2392